

Supporting Information

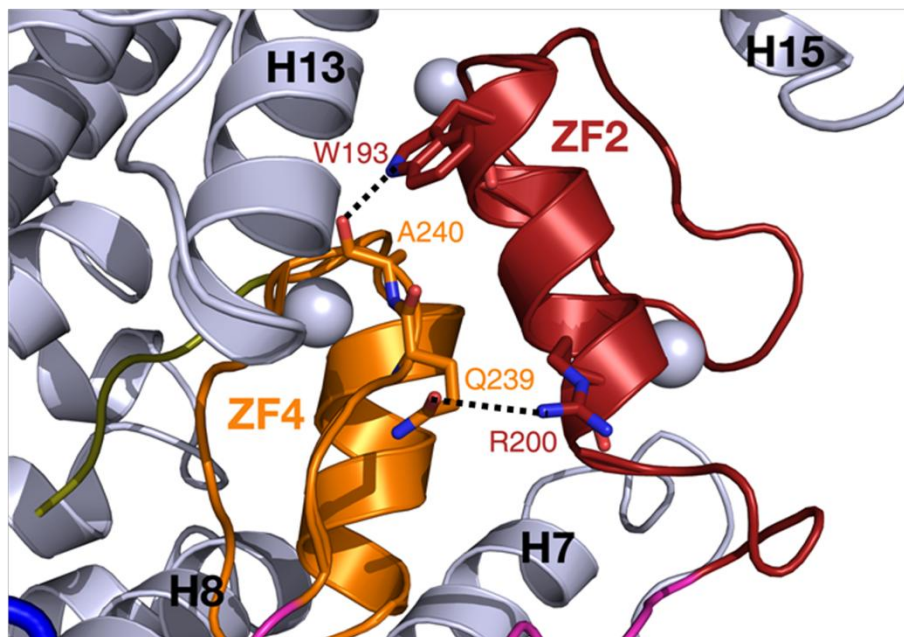


Figure S1. Intramolecular interaction between ZF2 and ZF4 in Snail1. Two hydrogen bonds between ZF2 and ZF4 were represented as dotted lines.

```

Snail1      FNCKYCNKEYLSLGALKMHIRSHHTLPCVCGTCGKAFSRPWLLQGHVHTRHTGKPFSC P
KLF         HT CAHPGCGKSYTKSSHLKAHLRHTGKPYACTWE
KLF8       HQ CDFAGCSKVYTKSSHLKAHRRRHTGKPYKCTWD
           *  *   *. *  :::.  *::.* * *****: *

Snail1      HCSRHTAFADRSNLRHTHLQHTTHSDVKKYQCQACARTFSRMSLLHTHKHHTQESGCSGHTCPR
KLF         GCGWRFARSDHTELTRHYRKHTGQRPFRHTCQLCPRAFHTSRSDHLALHMHTKRHL
KLF8       GCSWKFARSDHTELTRHFRKHTGIKPFHTRCTDCNRSFHTSRSDHLSLHTHRRRH
           *.  **  .:*  *  :.*:  :  ::*  *  *:*  .  *  *  .

```

Figure S2. Sequence alignment of Snail1, KLF1 and KLF8 ZFs. NLS residues were represented as green color.

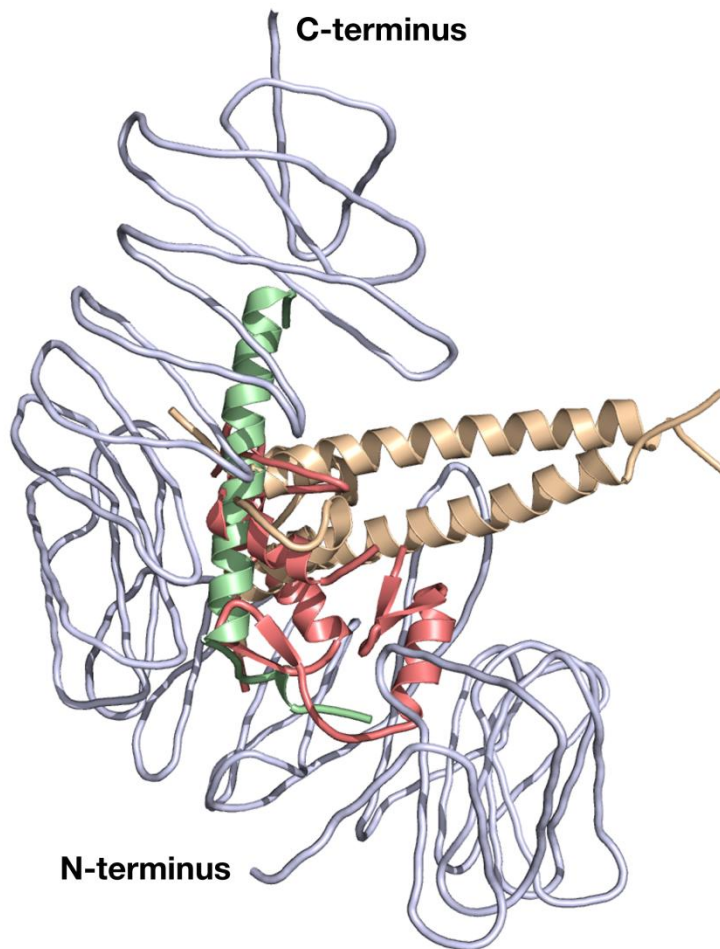


Figure S3. Binding modes of importin β cargoes. Snail1(pink), IBB(palegreen) and SREBP2(wheat) were shown by superimposing N-terminal 300 residues of each importin β s in importin β /cargo complex structures. For convenience, only an importin β from Snail1/importin β complex was represented.

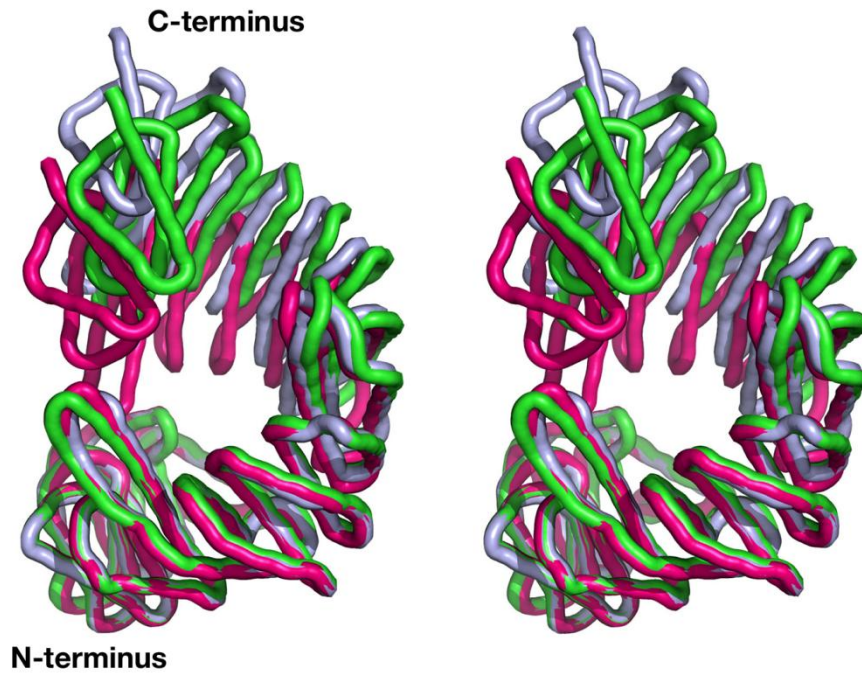


Figure S4. The conformational changes of importin β s in X-ray structures. Importin β structures were superimposed using N-terminal 300 residues and compared in stereo view image. Importin β (grey) in Snail1/importin β complex structure represents a looser helicoidal pitch for accommodating a bulky NLS than importin β complexes with IBB (hot pink) or SREBP2 (green).

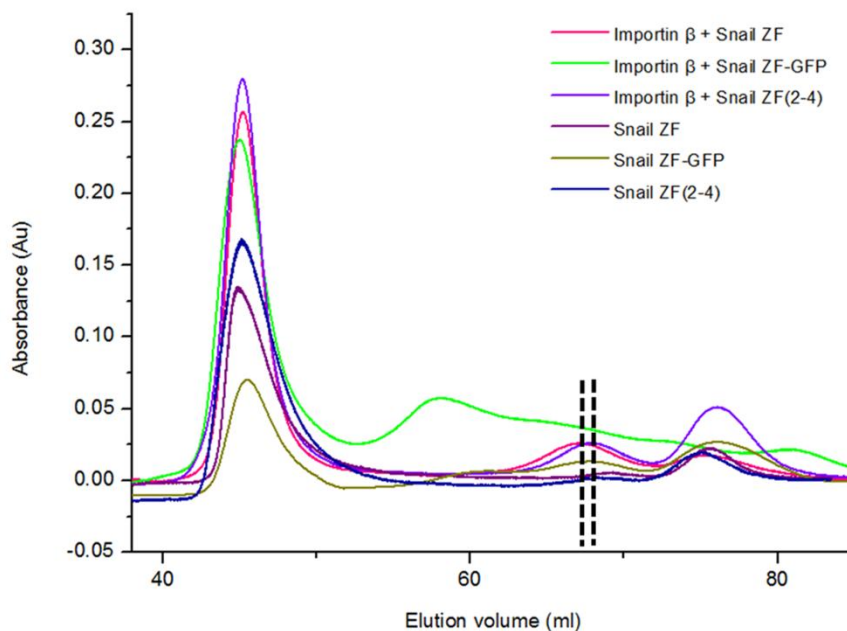


Figure S5. Overlay of the size exclusion chromatograms of Snail ZF, ZF-GFP, ZF(2-4) alone or with importin β . Samples from the peak fraction (indicated by dotted lines) are shown on an SDS-PAGE in Fig. 4a.