

J R Helliwell, M Helliwell and R H Jones:-
Supplementary figure 1

Le Bail extractions

fig (i) = 1.48889 Å data (low angle)

fig (ii) = 1.48889 Å data (high angle)

fig (iii) = 1.79615 Å data (low angle)

fig (iv) = 1.79615 Å data (high angle)

fig (v) = 1.4911 Å data low angle

fig (vi) = 1.4911 Å data high angle

fig (vii) = 1.3002 Å data low angle

fig (viii) = 1.3002 Å data high angle

fig (ix) = 2.1608 Å data low angle

fig (x) = 2.1608 Å data high angle

Plots showing observed counts (dots), calculated (solid line) and difference pattern for Le Bail extractions versus d spacings.

Figure (i)

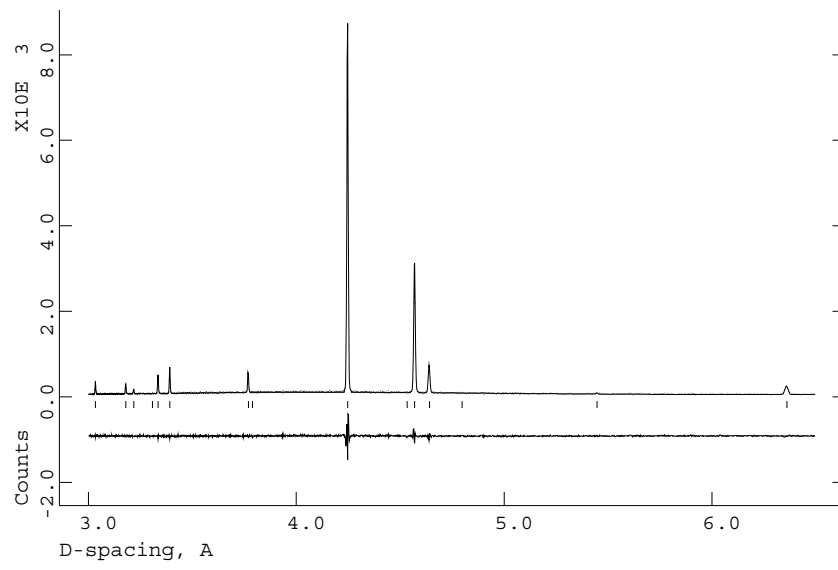


Figure (ii)

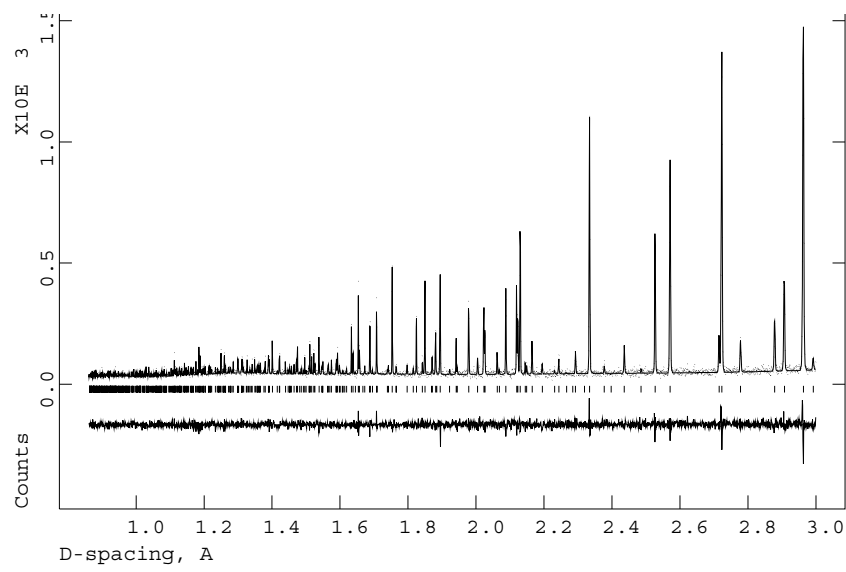


Figure (iii)

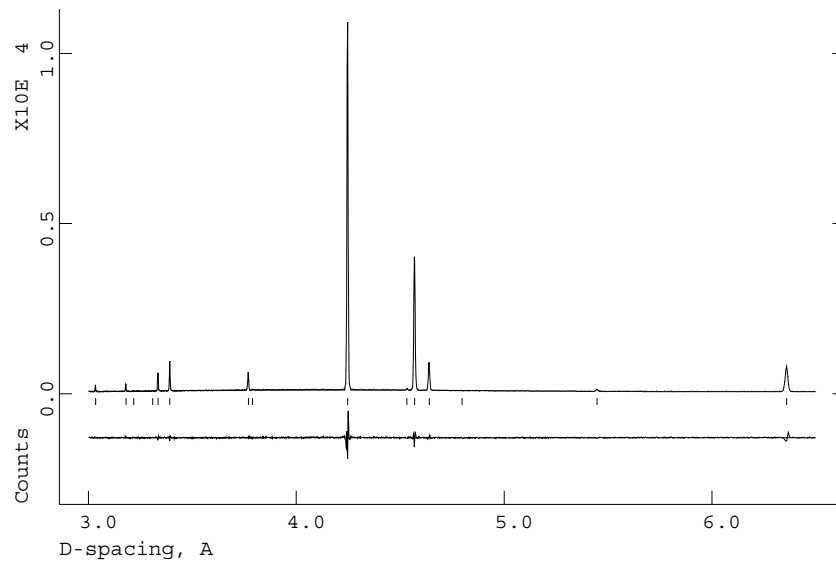


Figure (iv)

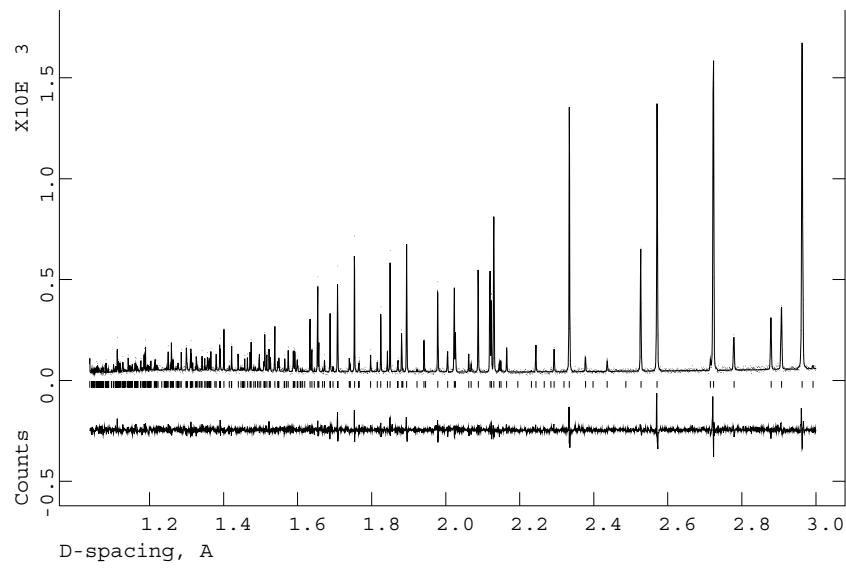


Figure (v)

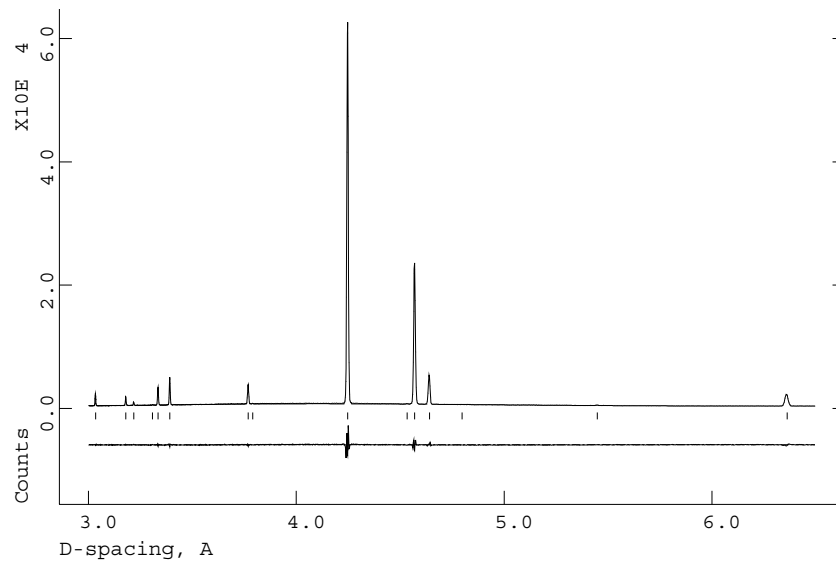


Figure (vi)

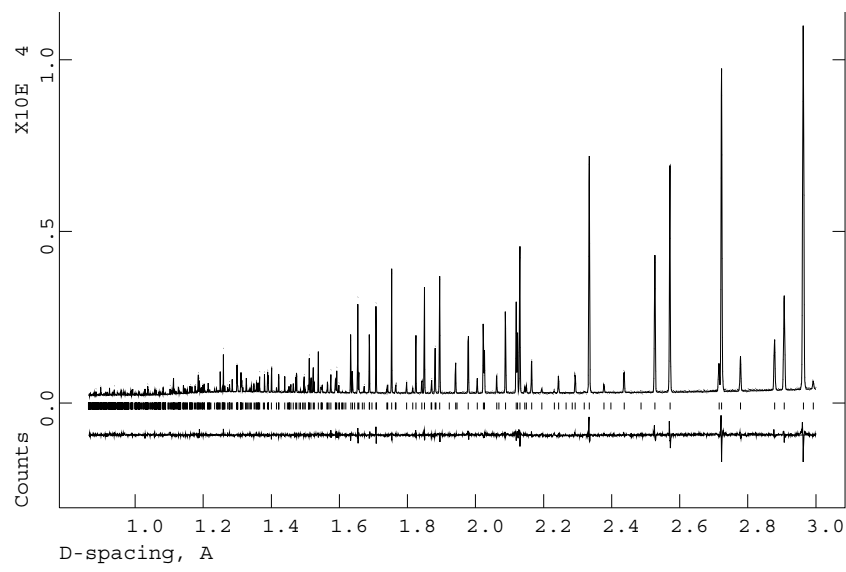


Figure (vii)

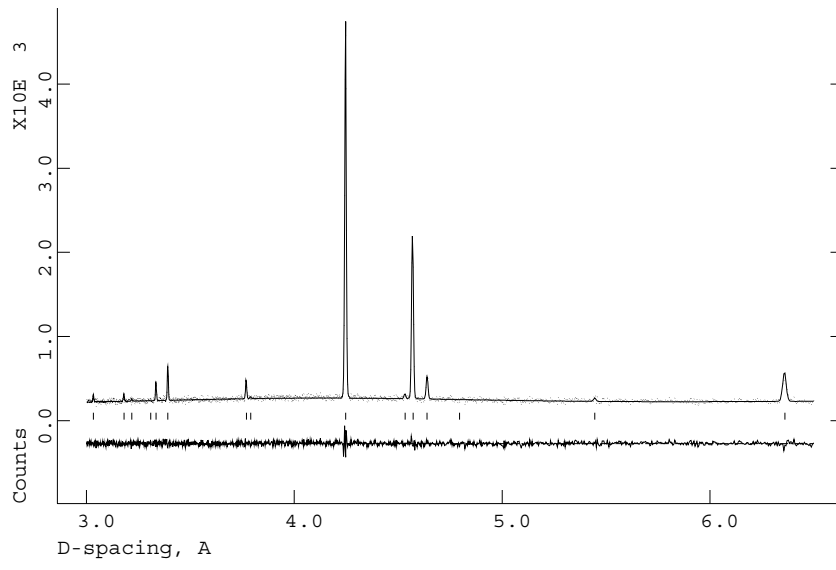


Figure (viii)

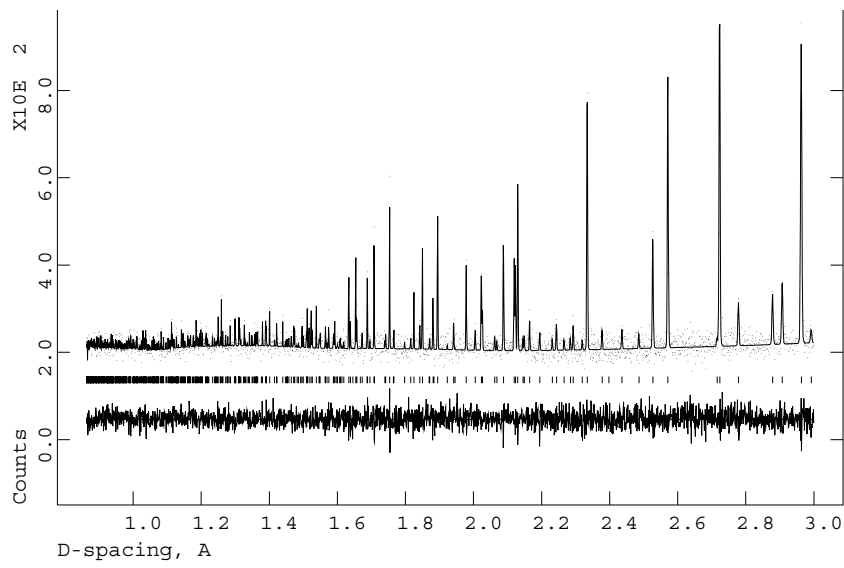


Figure (ix)

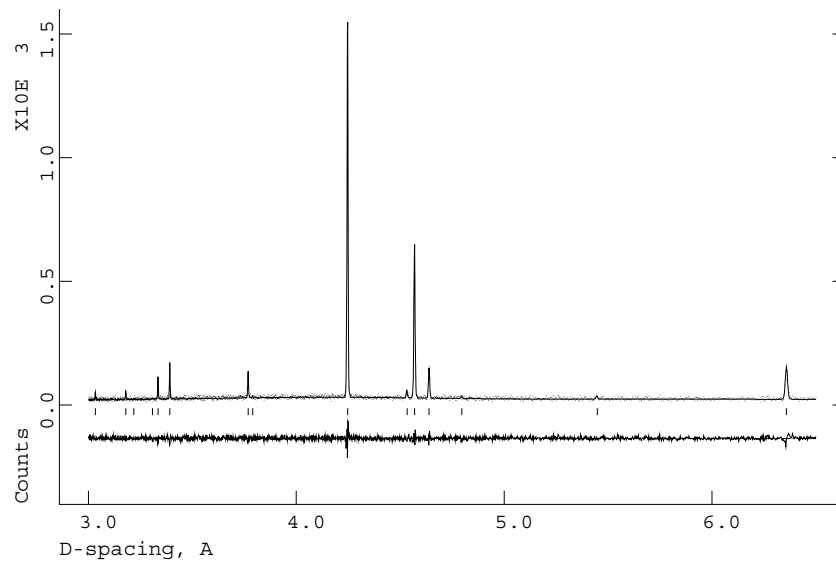


Figure (x)

